



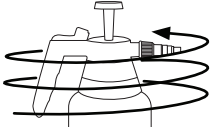
# QUICK START INSTRUCTION GUIDE

This guide provides an overview of how to use Stickit Pro. Please refer to our website for instructional videos and more information on how to use this product.

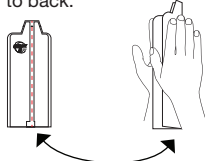
**It is recommended to drill all intended injection holes prior to mixing any adhesive to maximise pot life. Refer to image 3 overleaf.**

## 1kg Kit

**1 Unscrew Pump Handle**  
Twist anti-clockwise and lift.



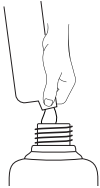
**2 Fold Pouch**  
Fold pouch inwards along red centreline so spouts lay back to back.



**3 Cut Spouts To Open**  
Hold at base of spouts, squeeze pouch and use a knife or scissors to cut tips off pouch.

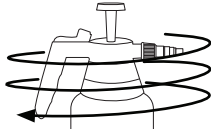


**4 Pour Product Into Bottle**  
Pour contents of one pouch only into mixing bottle.

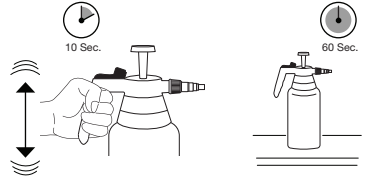


**Warning** – Read instructions over page for mixing more than one pouch of adhesive.

**5 Replace Pump Handle**  
Twist clockwise until firm.

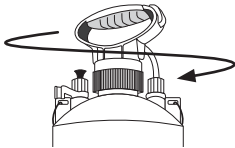


**6 Shake To Mix**  
Shake bottle up and down rapidly for 10 seconds to mix well. Let stand for 60 seconds before use.



## 5kg Kit

**1 Unscrew Pump Handle**  
Twist anti-clockwise and lift.



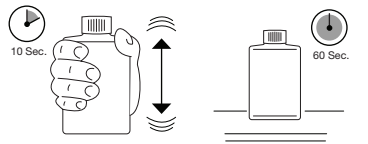
Next: Steps 2 & 3 As Above

**4 Pour into Mixing Bottle**  
Pour one pouch only into mixing bottle supplied.



**Warning** – Read instructions over page for mixing more than one pouch of adhesive.

**5 Shake To Mix**  
Shake bottle up and down rapidly for 10 seconds to mix well. Let stand for 60 seconds before use.



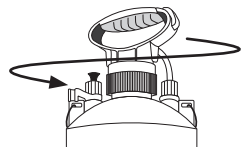
**6 Transfer Contents**  
Empty contents of mixing bottle into pump bottle



**7 Rinse Bottle**  
Rinse empty mixing bottle well with water.



**8 Fit Pump Handle**  
Screw pump handle firmly on to top of bottle.



Scan this QR Code to watch our setup, usage and clean-up video guide.

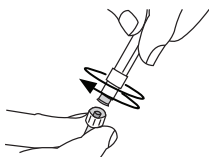
shalex.com.au  
**1300 720 535**

**Tip: Flush pump with water prior to use to make cleanup easier before adding adhesive to bottle.**  
 Fill your pump bottle with water, fit the pump handle then pressurise and push trigger until water flows out of needle. Shake pump bottle so water coats inside of bottle then remove handle and pour out remaining water. Fill with adhesive, pressurise and hold needle over waste container, then push trigger until white adhesive starts to flow out of needle and release trigger. You are now ready to start injecting.

## Application

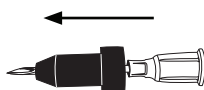
### 1 Fit Needle to Luer

Remove clear cap and twist needle clockwise to fit.



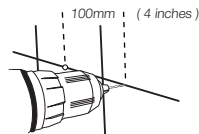
### 2 Prepare Needle

Place needle through rubber plug.



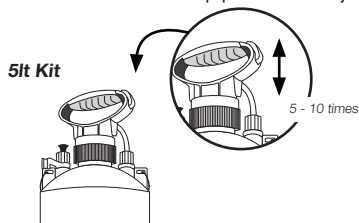
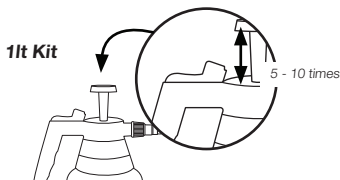
### 3 Drill Holes

At 100mm intervals around tile.  
 \* See full guide for more details.



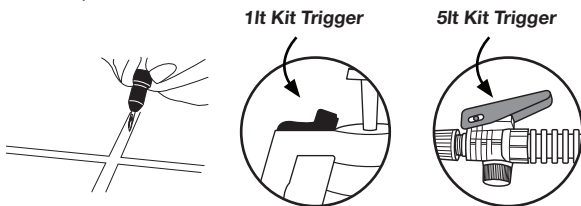
### 4 Pump Handle

To charge bottle with pressure for application, pump 5 - 10 times or until firm to build up pressure for injection.



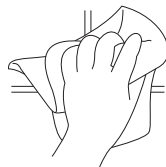
### 5 Inject StickIt Pro

Insert needle into drill hole and press trigger for 3 - 5 seconds per hole.



### 6 Wipe Up Excess

Use damp cloth to clean up excess before dry.



## ! Usage Warnings – Please Read Carefully

- 1: StickIt Pro is activated by mixing parts A & B – vigorous & rapid shaking is required to ensure adequate mixing.
- 2: StickIt Pro must be used before end of pot life (up to 2 hours max). The adhesive will increase in viscosity as end of pot life approaches. Discard any unused adhesive and wash injection equipment immediately if the adhesive thickens or viscosity increases during use or within 2 hours of first mix.
- 3: Mix only one pouch of adhesive at a time – the mixing bottle (for 5kg size)/ or pump bottle (for 1kg size) must not be more than 50% full to achieve adequate mixing action by shaking.

#### 4: If more adhesive is required

**1kg size** – Use entire contents before mixing second pouch in the pump bottle. Rinse pump bottle between mixes if using product for longer than 2 hours.

**5kg size** – Multiple pouches should be mixed one after the other in mixing bottle only, then the mixed adhesive can be added to the pump bottle. Do not attempt to mix and shake in the 5ltr pump bottle – always use the small mixing bottle provided. Adding multiple pouches of mixed adhesive to the pump bottle will decrease pot life – we suggest adding no more than 4 pouches at any one time. Rinse the mixing bottle well with water straight after use.

**5:** Stickit Pro can be used to fill larger voids and cavities. It may be necessary to top up injection holes where larger cavities exist. Where adhesive level drops, top up with more adhesive within 20 minutes of first injection.

**6:** Stickit Pro can be used on damp substrates but should not be used where water may be pooling. Using drawing up needles on a syringe and injecting compressed air may assist in removing pooling water before injecting into damp areas.

**7:** Do not inject Stickit Pro where the surface temperature may be below 5 degrees C / 40 degrees F as cure will stop. Heat the substrate if possible before injecting.

**8:** Entire contents of pouch must be mixed – do not attempt to mix a smaller quantity or store an open pouch.

**9:** Pot life can be reduced by mixing adhesive and leaving exposed to air for 10-15 minutes before injecting.

**Clean-Up** - Holding handle, twist bottle anticlockwise to release air pressure. Discard any left over product from bottle and rinse out well with water. Add a small amount of water to the bottle, tighten pump handle and pressurise, then shake bottle and press trigger to flush water through. Then discard water and repeat this step 2 - 3 times with clean water.

**Storage** - Store needle in storage cover.

**Note:** Before next use, pump a small amount of water out of luer fitting before attaching needle to make sure there are no blockages.

**Coverage** - Coverage is dependent on the size of the de-laminated cavity and can differ widely from job to job. As a guide 1kg of Stickit Pro will treat approx 10m<sup>2</sup> of render, plaster or wall tile and 5m<sup>2</sup> of floor tile. Larger tiles or natural stone are typically laid with a larger notched trowel and voids can be significantly larger.

**Drying Time** - Stickit Pro has a pot life of up to 2 hours at ambient temp of 25 degrees c / 77 degrees f. Higher temperatures will decrease pot life and speed cure. Mixing larger quantities of adhesive (ie: more than one pouch) will decrease pot life.

Stickit Pro will form a flexible gel at end of pot life. This gel phase will continue for 48-72 hours after which Stickit Pro will harden and obtain full bonding strength. Avoid movement of the substrate during the gel phase to ensure optimal result.

**Precautions** - The injector needle is very sharp – keep protector cap on at all times when not in use and keep out of reach of children. Protect or mask all porous surfaces around injection holes as Stickit Pro will leave a tacky surface if left exposed.



Scan this QR Code to watch our setup, usage and clean-up video guide.

shalex.com.au  
**1300 720 535**

## Project Usage Instructions

**Floor/Wall Tiles** - To identify the drummy or de-laminated area tap gently on surface of tile with a large coin (e.g. 20 cent piece). De-laminated areas will sound hollow and give a different tone to solid/bonded sections. Clean affected area well with mild detergent and warm water. Dry the surface with a clean rag. Mark out affected area with masking tape, or chalk.

With vertical surfaces (e.g. walls) work from top to bottom, horizontal surfaces work from edges and corners back toward centre or exit points (e.g. doorways). Carefully drill holes around edges of tiles – retain mortar/grout dust after removing drill (you will use this to plug the hole afterwards to ensure the grout matches the original). Use a piece of paper or card to scrape up or catch falling grout dust.

Use a vacuum to remove excess dust from holes if available. Carefully push needle through hole in end of rubber grommet so needle tip is exposed. Insert the needle fully into drill hole and push rubber grommet against hole. Depress trigger and inject slowly. Release trigger and slowly release pressure on rubber grommet. It may be necessary to drill multiple holes around the perimeter before locating a void where Stickit Pro can flow freely under the tile. When Stickit Pro comes out of adjacent holes stop injecting. If adhesive leaks from wall tiles insert a round wooden splint to block hole. Inject more Stickit until it comes out of the hole then move to next tile or area. Injecting around edges will usually provide sufficient adhesive to re-bond tile if adhesive cannot flow freely underneath.

***Best results are achieved by drilling and injecting smaller amounts of adhesive at approx. 100mm intervals around the perimeter of the tile.***

Injecting larger amounts of Stickit Pro into floor tiles may raise level of the tile slightly. Where this occurs, a weight should be placed on the affected tile/s until dry to ensure the level is the same as surrounding tiles. Wipe any excess Stickit Pro that may be ejected from the drill holes when the weight is placed on the tile.

When treating floor tiles which have previously lifted due to expansion it may be necessary to remove a line of grout to allow the tile to sit flat again. Use a grout removal tool or take a grinding disk and break in half. Place a straight-edge (e.g. piece of timber) along the problem grout joint. Slide ½ grinding disk (flat side down) back and forth quickly until grout has been removed.

**Concrete & Clay Pavers/Natural Stone/Porcelain/Travertine or Large Format Tiles** - Same method as with floor tiles but it may be more effective to drill through the tile or paver to ensure sufficient Stickit reaches the problem area rather than working around the edges. Porcelain or tiles laid butted together may not have sufficient space to drill through grout. Do not attempt to drill along edge or in corners when grout width is less than 2mm as you may chip the tile edge. Your drill bit is designed to drill through tiles. When drilling through the tile do not drill closer than 5mm from the edge.

**Cement Render / Plaster** - Spot injecting along larger cracks is recommended as pre-treatment and to minimize the risk of dislodging sections of render/plaster. Carefully identify drummy area with a coin as for tiles. Take care when drilling not to disturb loose section of render. Drill holes along lowest edge of de-laminated area and work upwards. If Stickit flows out of lower holes plug these with a round wooden splint and continue. For very loose sections of render/plaster inject a small area first and allow to dry before treating the next area. Take care not to inject too much Stickit to loose areas as this may force these sections off the wall.

**Precaution** - In internal wet areas and balconies drill the first hole slowly and regularly remove drill to gauge depth of tile, do not drill deeper as this may penetrate any waterproof membrane and the flooring substrate. When the desired drilling depth is reached mark the depth on the drill bit with some masking tape to ensure all future holes are drilled to the same depth. As a guide the flutes (grooves) in the drill bit are 20mm long.

**Wipe up excess Stickit Pro before dry with a wet rag.** Sprinkle mortar dust onto injection holes and rub with finger to disguise hole. Drill holes may be noticeable immediately after repair but will blend in with original grout after a short period of time. Scuffing the entire grout line gently to remove stained surface layer will help disguise the injection points if these are visible upon drying.